

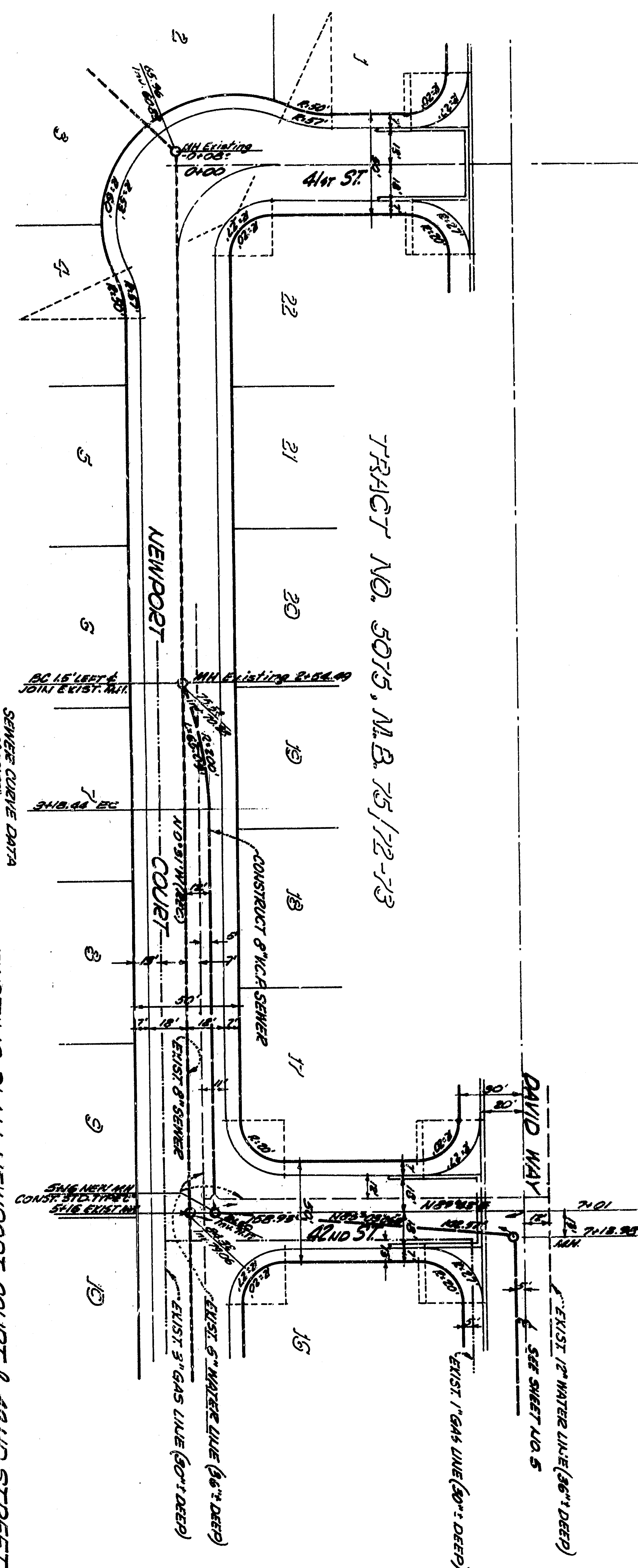
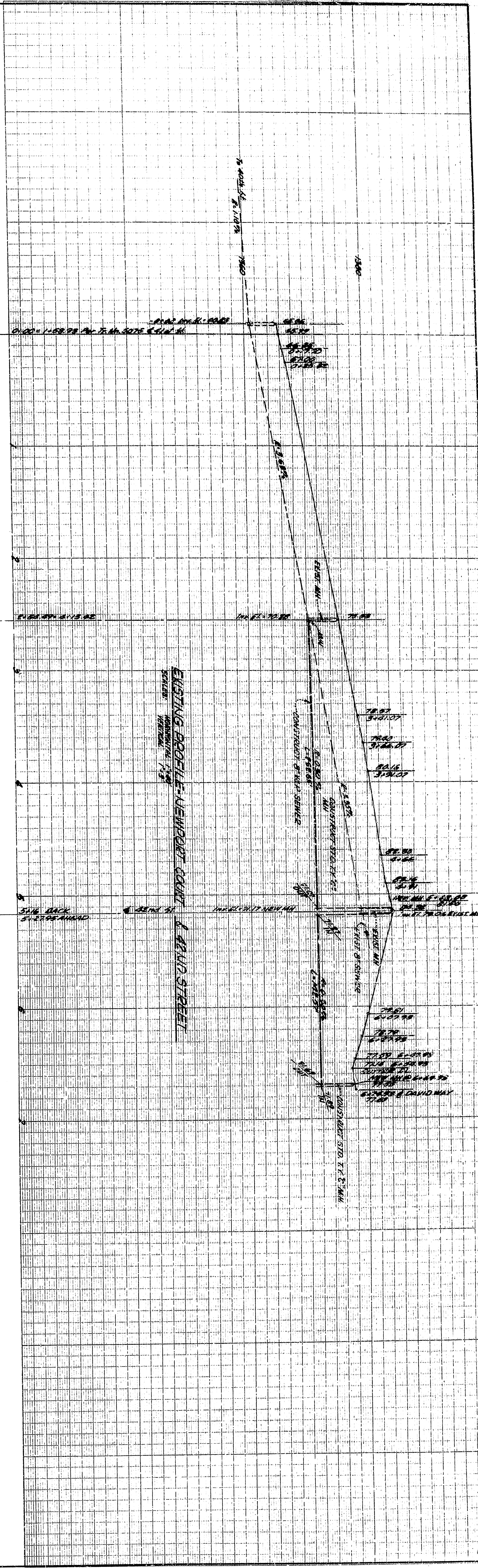
EXISTING PLAN NEWPORT COULET & DAVID STREET

SEWER CURVE DATA
 41.875/57.57
 61.200
 71.510
 71.510
 27.000

NOTE: See Sheet No. 1 for Sewer Labels

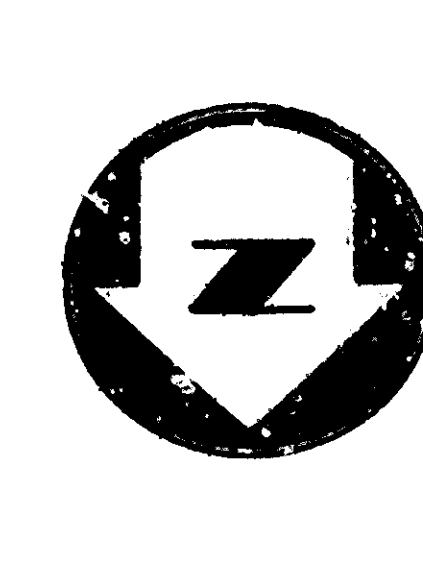


DEPARTMENT OF ENGINEERING CITY OF SAN BERNARDINO	
TRACT NO. 3075 STREET IMPROVEMENT PLANS & SEWER PLAN	
SUBMITTED BY R. J. ... CIVIL ENGINEER, NO. 81,844	REFERENCE DRAWN BY W.P.P.
APPROVED J. ... CIVIL ENGINEER, NO. 4,214	DRAWING NO. 2350 SHEET 1 OF 7
CHECKED BY L.L.B.	



EXISTING PLAN NEWPORT COULET & DAVID STREET
 SHEET 1 OF 7
 NOTE: See Sheet No. 1 for Sewer Layouts

SEWER CURVE DATA
 41.875/5.975
 63.200
 7.937/0.61
 2.700/0.3



DEPARTMENT OF ENGINEERING CITY OF SAN BERNARDINO			
TRACT NO. 3075 STREET IMPROVEMENT PLANS & SEWER PLAN			
SUBMITTED BY R. J. ... CIVIL ENGINEER, NO. 51,144	REFERENCE DRAWN BY K.M.P.	DRAWING NO. 2550 SHEET 1 OF 7	
APPROVED J. ... CIVIL ENGINEER, NO. 4,114	CHECKED BY J.L.B.	SHEET NO. 1 OF 7	